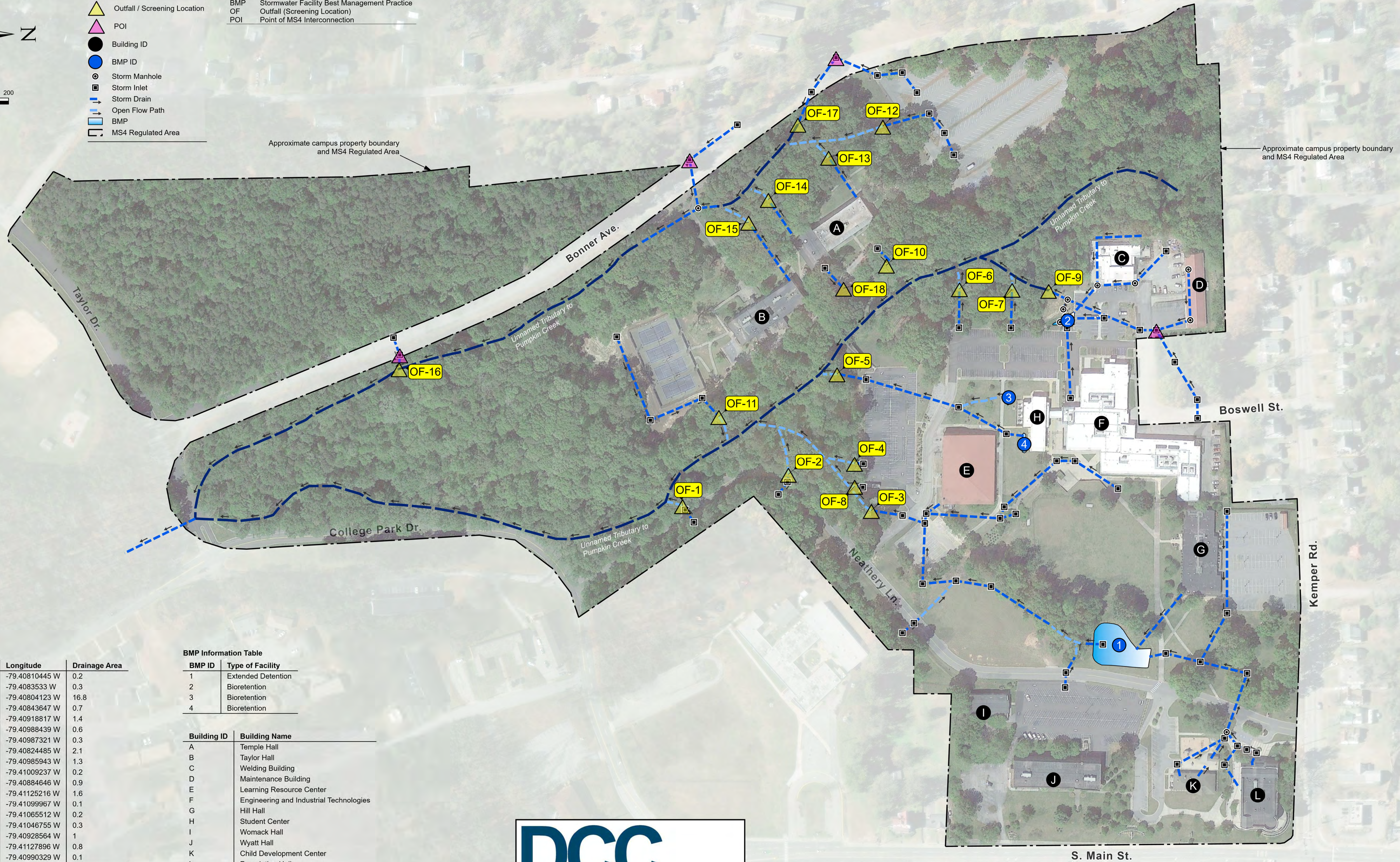




- Legend**
- Outfall / Screening Location
 - POI
 - Building ID
 - BMP ID
 - Storm Manhole
 - Storm Inlet
 - Storm Drain
 - Open Flow Path
 - BMP
 - MS4 Regulated Area

- Abbreviations**
- BMP Stormwater Facility Best Management Practice
 - OF Outfall (Screening Location)
 - POI Point of MS4 Interconnection



Outfall Information Table

Outfall ID	Latitude	Longitude	Drainage Area
OF-1	36.56283843 N	-79.40810445 W	0.2
OF-2	36.56355573 N	-79.4083533 W	0.3
OF-3	36.56411184 N	-79.40804123 W	16.8
OF-4	36.56400326 N	-79.40843647 W	0.7
OF-5	36.56389423 N	-79.40918817 W	1.4
OF-6	36.56472869 N	-79.40988439 W	0.6
OF-7	36.5650835 N	-79.40987321 W	0.3
OF-8	36.56400156 N	-79.40824485 W	2.1
OF-9	36.56533034 N	-79.40985943 W	1.3
OF-10	36.56423912 N	-79.41009237 W	0.2
OF-11	36.56309256 N	-79.40884646 W	0.9
OF-12	36.56422813 N	-79.41125216 W	1.6
OF-13	36.563859 N	-79.41099967 W	0.1
OF-14	36.56344835 N	-79.41065512 W	0.2
OF-15	36.56331297 N	-79.41046755 W	0.3
OF-16	36.56093937 N	-79.40928564 W	1
OF-17	36.56365555 N	-79.41127896 W	0.8
OF-18	36.56394683 N	-79.40990329 W	0.1

BMP Information Table

BMP ID	Type of Facility
1	Extended Detention
2	Bioretention
3	Bioretention
4	Bioretention

Building ID	Building Name
A	Temple Hall
B	Taylor Hall
C	Welding Building
D	Maintenance Building
E	Learning Resource Center
F	Engineering and Industrial Technologies
G	Hill Hall
H	Student Center
I	Womack Hall
J	Wyatt Hall
K	Child Development Center
L	Foundation Hall

Outfall Information Table Notes:

- The receiving water for all regulated outfalls is the Dan River - Pumpkin Creek (RD 39), and is designated as impaired by the Virginia 2022 305(b)/303(d) Water Quality Assessment Integrated Report.
- No total maximum daily load (TMDL) waste load allocations (WLA) have been assigned.



MS4 Mapping
Latest Revision: February 28, 2024

